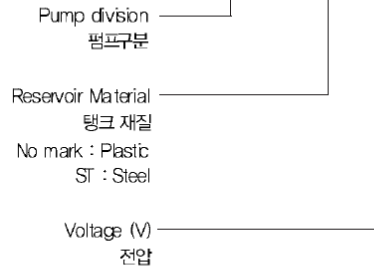


Oil Lubrication pumps

AMGP-025N Series



AMGP - 025N - ST 110

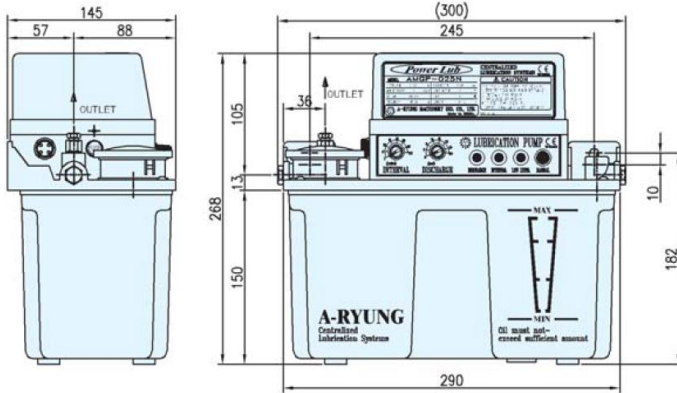


- This type is excellent endurance designed anti-vibration structure to use much shock or vibration.
- This pump has alarm device when the oil is short and has terminal box connecting with control device outside.
- As the pump is installed feed button switch inside of pump, it is easy to remove the air and to operate by manual.
- This pump is mainly used machine tools, printing, foods, fabrics, injection machine, press and various industrial machine.

Type	Discharge volume 토출유량 cc	Interval Time 정지시간 min	Working Pressure 사용압력 MPa	Reservoir capacity 탱크용량 ℓ	Viscosity 사용점도 cSt	Outlet 토출구 PT	Net weight 중량 kg	Phase 1 Ø, Poles 2P			
								Motor Output 출력 W	Fre- quency 주파수 Hz	Rated voltage 전압 V	Current 전류 A
025N 025N-ST	3~60	3~120	0.8	4.0	30 ~ 500	1/8" (Ø4)	2.8	15	50	100/200	1.4/0.7
									60	110/220	1.2/0.6

External dimension 외형도

AMGP-025N

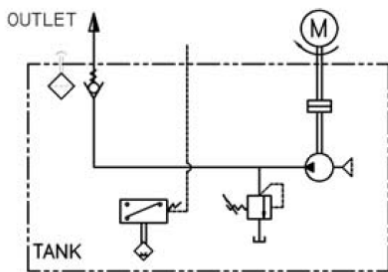


Applications 적용

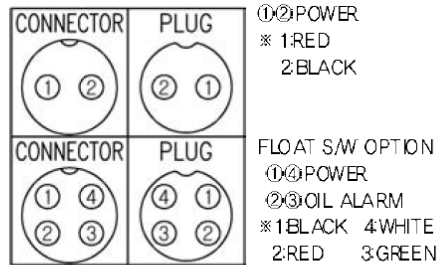
- Type of fluid : Oils
- Recommended oil
Winter → below 32cSt
Summer → below 68cSt
- Material
Case : Aluminum (ALDC)
Cover : Plastic (ABS)
Tank : Plastic (ABS) / Steel
Gear pump : Steel
Shaft guide : Plastic
- Temperature : below 80°C
- Oil Supply method : Proportional
- Controller method : Analog type
- Float switch : FS-A
- Fuse : 3A

Circuit diagram 회로도

AMGP-025N
비례식(Resistive method)



Electric connection 결선도



Interval time 최소한의 설정조건

Discharge Time (토출시간)	Interval Time (간헐 정지시간)
1~10sec 일때	약 2min 이상
11~30sec 일때	약 3min 이상
31~60sec 일때	약 5min 이상
61~99sec 일때	약 10min 이상

- As this pump occurs the high heat in motor when working, set the interval time following the information. The motor stops automatically by high motor heat, causing the interval time is shorter than discharge time. But the pump works normally after motor cooling.

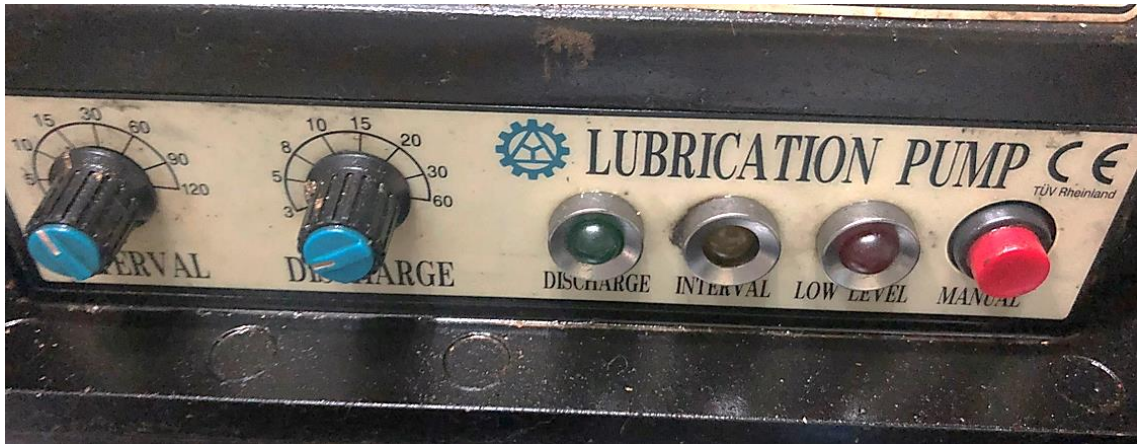
할 때에는 아래 주소로 연락 하십시오.

ATTENTION OF HANDLING ITEMS

1. Press "FEED" Button to eliminate the air in the pipe when first setting before connecting with distributors.
2. The interval time has to set as long as possible, and set sufficiently the discharge time to lubricate to oiling spots.
3. The float switch in the reservoir can aware when the oil drops to the minimum limitation level.(option)
4. The oil viscosity has to be used within 30~50cSt.
5. The fuse is broken when the "LED" is not blinking during the electric power operation. Replace the broken fuse with the new fuse attached on the case wall.
6. Be careful to use and clean with strong volatile oil because the reservoir can be easily broken.
7. The clear oil have to be used. Clean the reservoir and suction filter more than one time every year.
8. Refer the operating instruction, and feel free to contact below address if you have questions and quality service.

A-RYUNG MACHINERY IND. CO., LTD.

601-1, Daegok-ro, Keunseong-myun, Daegu-city, Gyeongsang-do, Korea
 http://www.aryung.co.kr E-mail: a-ryung@aryung.co.kr
 Tel: +82-51-382-4401 Fax: +82-51-382-4402



Power Lub

CENTRALIZED LUBRICATION SYSTEMS **CE**
TUV Rheinland

MODEL	AMGP - 025N		
INTERVAL TIME	3 - 120 min	DISCHARGE VOLUME	3 - 60
WORKING PRESSURE	8 kgf/cm ²	MOTOR OUTPUT	15 W
VOLTAGE	200 / 220 V	PHASE	1 φ
FREQUENCY	50 / 60 Hz	CURRENT	0.5 / 0.6 A

A-RYUNG MACHINERY IND. CO., LTD.
Made in KOREA

CAUTION

모일 주유 시 아래 사항에 주의 하십시오

1. 청결한 적정 점도(32-500cSt)의 오일 사용 하십시오.
2. FILTER를 제거하지 마십시오.
3. 오일 상한선을 넘지 마십시오.
4. 이 펌프는 간헐식 작동입니다. 연속적으로 사용을 원할 시에는 본사로 문의하십시오.

SERIAL No. 1104025

LUBRICATION PUMP **CE**
TUV Rheinland

A-RYUNG
Centralized
Lubrication Systems

