

GPx-FM

Full Service Electric Fire Pump Controllers

Models:

GPA - Full voltage across the line starter

GPY - Reduced voltage y-delta open starter

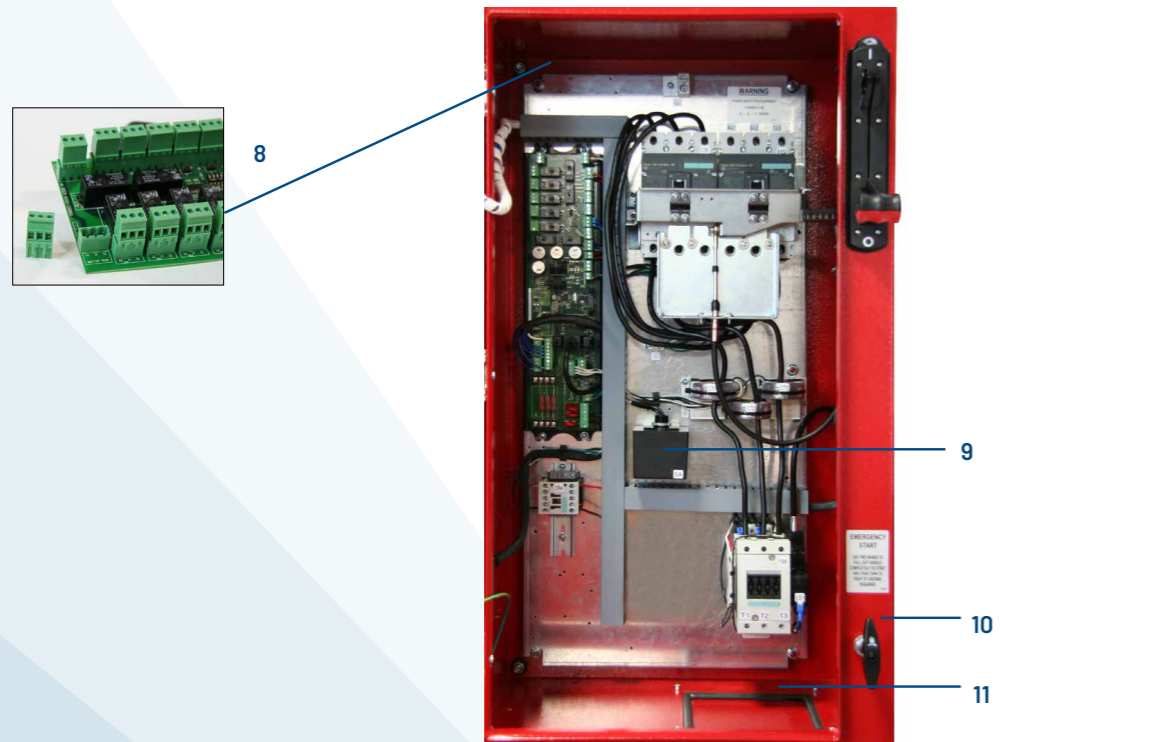
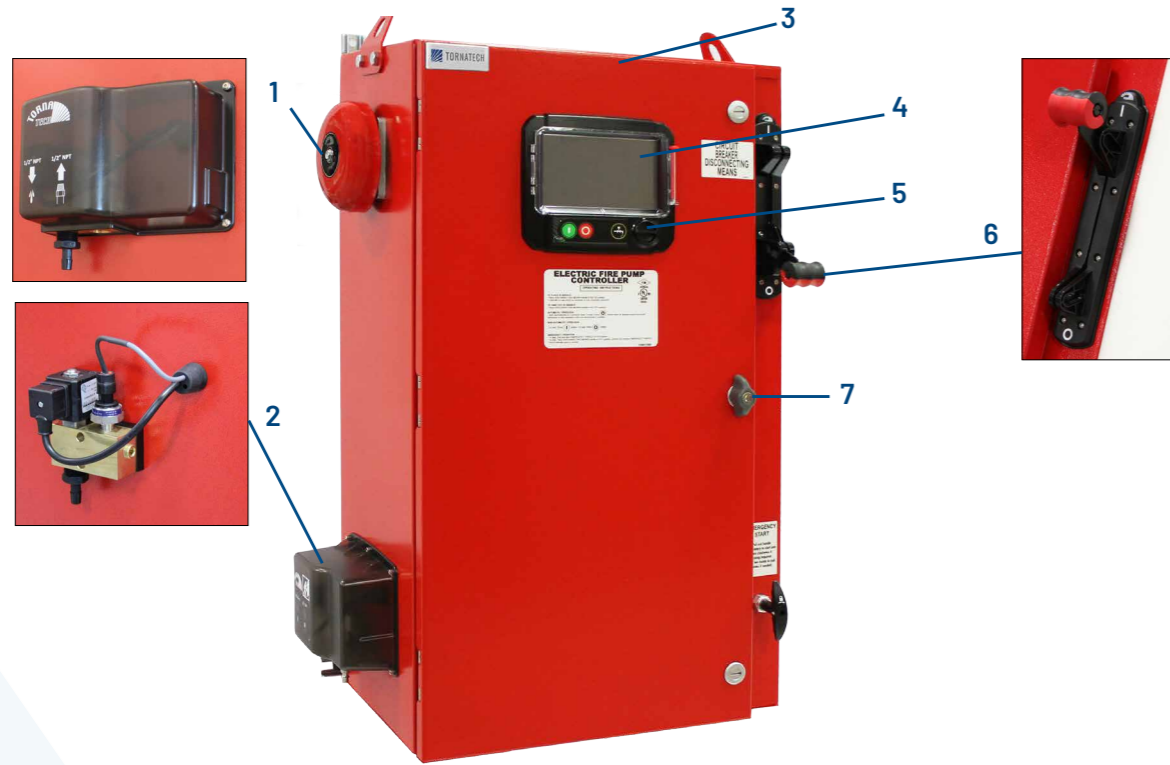
GPS - Reduced voltage electronic soft starter

Standard Features

- ViZiTouch operator interface
- IP55 enclosure
- Pressure and event recorder
- Voltage and amperage display
- Single operator for both isolating switch and circuit breaker
- Surge arrestor
- Lifting lugs
- Run test push button
- Emergency start handle
- Start and stop pushbuttons
- Locked rotor protector
- Phase reversal indication
- Remote start / deluge valve start provision
- Pressure transducer and run test solenoid valve externally mounted
- Gland plate
- Audible alarm
- Alarm contacts for remote indication
- Programmable automatic shutdown (minimum run timer)
- Programmable sequential start timer (delay start timer)



1. Alarm bell
2. Externally mounted pressure transducer and run test solenoid valve with protective cover
3. Lifting Lugs
4. ViZiTouch V2 operator interface
5. Exterior USB Port (Interior USB port also supplied)
6. Custom designed Isolation switch / Circuit breaker operator handle
7. Key lock
8. Remote alarm contacts with removable terminals
9. Surge arrestor
10. Custom designed emergency start mechanism with integrated limit switch
11. Gland plate



GPA MODEL SHOWN

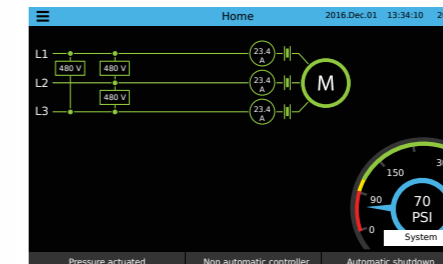


ViZiTouch V2 Operator Interface



HOME

Electric Fire Pump Controller



ON-SCREEN MENU

- Home
- Alarm
- Configuration
- History
- Service
- Manual
- Languages

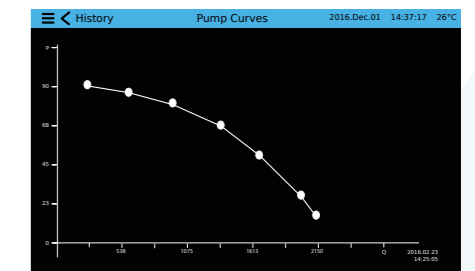
ViZiTouch V2 major features include:

- Touch screen operation with 7" color display and intuitive graphics
- Multi-language
- Upgradable software
- Password protected

HISTORY/STATISTICS

Statistics	2016.Dec.01	14:34:28	26C
From			
Since	2016.12.01	14:28:09	
On Time	61:04:08:27		
Motor			
On Time	0:00:08:57		
Start Count	20		
Last Started On	2016.12.01	14:08:46	
Pressure			
Minimum	99.1 PSI		

PUMP CURVES



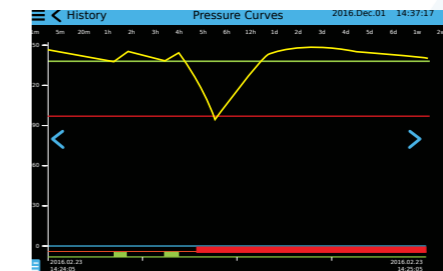
SETTINGS

Config	2016.Dec.01	14:34:28	26C
Pressure	PSI	Max. Pres.	300
PT1		Cut-out	150
		Cut-in	100
Periodic test	Monday	7	30
Week Test		Duration (min)	5
RUN TEST		Duration (min)	10
Auto Shutdown (m)		Duration (min)	10
Date and time	2016.Dec.01	14:09:55	
Advanced			
User login			

EVENTS

History	Events	2016.Dec.01	14:34:28	26C
2016.12.01	14:28:52	Under Voltage: ACTIVE		
2016.12.01	14:28:23	Under Voltage: INACTIVE		
2016.12.01	14:28:09	Alarms Reset		
2016.12.01	14:28:08	ACB in OFF or Tripped: INACTIVE		
2016.12.01	14:12:06	Alternate is Tripped/Open: INACTIVE		
2016.12.01	14:11:22	Pump On Demand: INACTIVE		
2016.12.01	14:09:55	Control Voltage not Healthy: ACTIVE		
2016.12.01	14:08:46	Generator: Started		
2016.12.01	14:03:11	Motor: Started in Automatic		
2016.12.01	14:03:03	Loss of Power: ACTIVE		

PRESSURE CURVES



SERVICE

Home	Service	2016.Dec.01	14:33:06	26C
TORNATECH				
Commissioning date	2016.12.01	14:28:52		
Last service date	2016.12.01	14:28:52		
Service interval	1 year			
Next service due	2016.12.01	14:28:52		
Complete service				
Live View				
Nameplate Information				
Jockey pump cut-out	110			
Jockey pump cut-in	130			

GPx-FM SERIES

WEIGHTS AND DIMENSIONS

GPA-FM / GPY-FM			
VOLTAGE	KW	Approx. Dimensions in mm	Approx. Weight in kg
380V - 415V	5 - 150	508 h x 914 w x 305 d	66
	200	810 h x 1372 w x 358 d	91
	5 - 200	782 h x 1727 w x 457 d	165
	250	914 h x 1727 w x 457 d	180

SHORT CIRCUIT WITHSTAND RATING, VOLTAGE & KW

WITHSTAND RATING (SHORT CIRCUIT CURRENT)	380V TO 415V
STANDARD 100KA	3.7 - 220 KW
STANDARD 50KA	257 - 355 KW

HOW TO ORDER: GPx-FM - V / HP / Ph / Hz / Options

Ex.: GPA-FM - 208 / 30 / 3 / 60 / Options

AMERICAS

Tornatech Inc.

Head Office

Laval, Québec, Canada

Tel: + 1 514 334 0523

Toll free: + 1 800 363 8448

EUROPE

Tornatech Europe SPRL

Wavre, Belgium

Tel: + 32 (0) 10 84 40 01