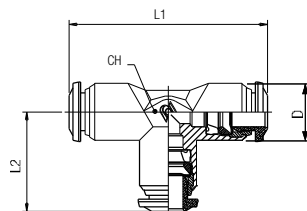


57230

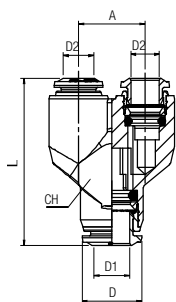
RACCORDO A T INTERMEDIO
 TEE CONNECTOR
 T-ANSCHLUSS
 RACCORD TÉ
 RACOR A T INTERMEDIO
 CONEXÃO EM "T" TUBO-TUBO



Code	Tube	L1	L2	CH	D	Pack.
* 57230 00 001	4 (5/32)	34	17	9	10	10
57230 00 006	5	40	20	11	12.5	10
57230 00 002	6	42	21	11	12.5	10
* 57230 00 003	8 (5/16)	45	22.5	13	14	10
57230 00 004	10	53	26.5	16	17	10
57230 00 005	12	61	30.5	19	21.5	10
57230 00 008	14	65.5	32.5	19	21.5	10

57310

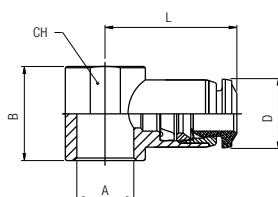
RACCORDO A Y INTERMEDIO
 Y CONNECTOR
 Y-ANSCHLUSS
 RACCORD Y SIMPLE
 RACOR A Y INTERMEDIO
 CONEXÃO EM "Y" TUBO-TUBO



Code	Tube	A	L	CH	D	Pack.
* 57310 00 001	4 (5/32)	11	32	11	10	10
57310 00 004	5	13.5	35	13	12.5	10
57310 00 002	6	13.5	36.5	13	12.5	10
* 57310 00 003	8 (5/16)	15.5	41	15	14	10
57310 00 008	10	18.5	48	18	17	10

57500

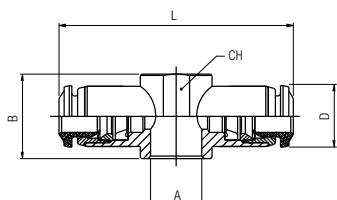
ANELLO A L ORIENTABILE
 SINGLE BANJO BODY
 RINGANSCHLUSS
 CORPS SIMPLE POUR BANJO
 ANILLO ORIENTABLE SIMPLE
 ANEL ORIENTÁVEL EM "L"



Code	Tube	A	B	L	CH	D	Pack.
* 57500 00 001	4 (5/32)	M5(10/32)	12.5	19	-	10	10
57500 00 002	4	M6	12.5	19	-	10	10
* 57500 00 003	4 (5/32)	1/8	15	21	14	10	10
57500 00 013	5	M5	12.5	20	-	12.5	10
57500 00 017	5	M6	12.5	20	-	12.5	10
57500 00 014	5	1/8	15	21.5	14	12.5	10
57500 00 015	5	1/4	17	24.5	18	12.5	10
57500 00 016	6	M5	12.5	20.5	-	12.5	10
57500 00 018	6	M6	12.5	20.5	-	12.5	10
57500 00 004	6	1/8	15	22	14	12.5	10
57500 00 005	6	1/4	17	25	18	12.5	10
* 57500 00 006	8 (5/16)	1/8	15	24	14	14	10
* 57500 00 007	8 (5/16)	1/4	17	26	18	14	10
* 57500 00 008	8 (5/16)	3/8	20	28	21	14	10
57500 00 009	10	1/4	17	29	18	17	10
57500 00 010	10	3/8	20	30.5	21	17	10
57500 00 012	12	3/8	20	32.5	21	21.5	10
57500 00 021	12	1/2	24	35	25	21.5	10
57500 00 022	14	1/2	24	35.5	25	21.5	10

57510

ANELLO A T ORIENTABILE
 DOUBLE BANJO BODY
 DOPPELTER RINGANSCHLUSS
 CORPS DOUBLE POUR BANJO
 ANILLO ORIENTABLE DOBLE
 ANEL ORIENTÁVEL EM "T"



Code	Tube	A	B	L	CH	D	Pack.
* 57510 00 001	4 (5/32)	M5	12.5	38	-	10	10
* 57510 00 002	4 (5/32)	M6	12.5	38	-	10	10
* 57510 00 003	4 (5/32)	1/8	15	42	14	10	10
57510 00 008	5	1/8	15	43	14	12.5	10
57510 00 009	5	1/4	17	49	18	12.5	10
57510 00 004	6	1/8	15	44	14	12.5	10
57510 00 005	6	1/4	17	50	18	12.5	10
* 57510 00 006	8 (5/16)	1/8	15	48	14	14	10
* 57510 00 007	8 (5/16)	1/4	17	52	18	14	10